



8-3-127/2/D, Plot No.153, Flat No.201, Aruna Nilayam, opposite road to Kotak Bank, Behind Udipi Hotel lane, Srinagar Colony, Hyderabad - 500 073.



Call: 040-48507999
Mobile: +91 9032848562

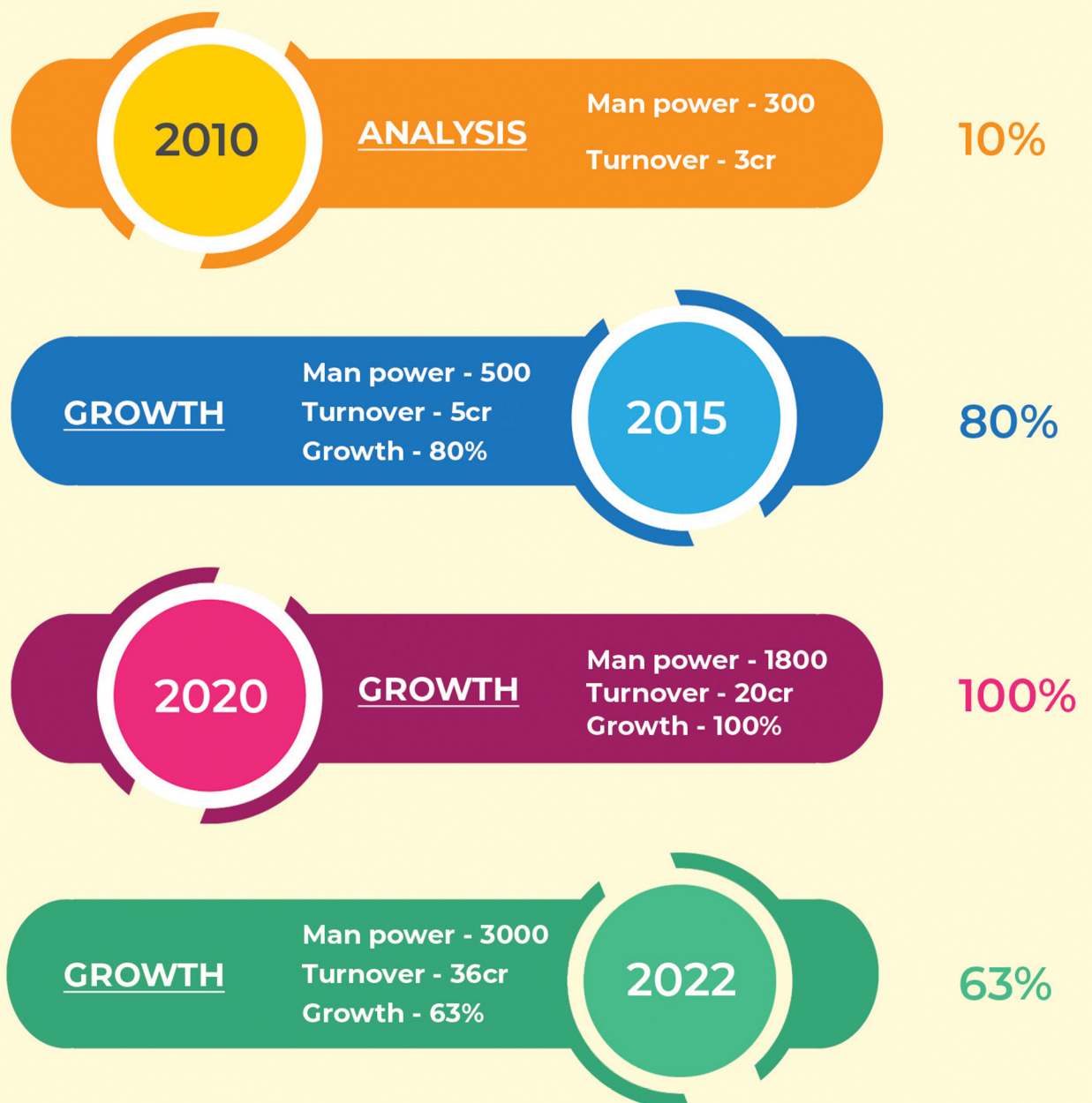


Email: info@suryatejainfra.com
Webiste: www.suryatejainfra.com | www.suryatejafacilities.com

TAKING GIANT STRIDES IN THE INFRA INDUSTRY

Surya Teja Infra Projects Pvt. Ltd. (STIPPL), is a subsidiary of Surya Teja Facilities Management Pvt. Ltd. (STFMPL), which is a leader in Facilities Management that has made a mark for itself on the national platform. Building on the professional and resourceful experience of the parent company, Surya Teja Infra Projects Pvt Ltd. has ventured into specializing in Toll Operations, Incident Management, Routine Maintenance, MMR (Major Maintenance) and others. In a short span of time, STIPPL has made swift progress and has garnered a decent pool of reputed clients. Besides, the company firmly believes in equipping the workforce with necessary industry experience. Consequently, training is offered in engineering works to take on diverse challenges and excel as professionals in the infra domain.

OUR JOURNEY STFMPL





OUR GOAL. SET THEM. BE THEM. REACH THEM.

OUR VISION

The objective is to become the topmost professional service provider in the field of infrastructure projects (Roads & Highways) in the near future. The company aims to have a steady focus on generating employment opportunities for urban and rural youth while progressively working towards creating a better and brighter future for all stakeholders.

OUR GOAL

Our goal is to earn the highest levels of trust and satisfaction of our clients.

OUR MISSION

- To excel in chosen areas with an exceptional teamwork and uncompromised standards, while performing to the company's fullest capacity and potential always.
- To achieve an impressive degree of client satisfaction through smart and unique implementation of innovative and cost-effective solutions that add value to clients.
- To be the industry leader with unmatched workmanship, which is achieved through consistent training and honing of skill-sets for a quick customer care service.

FINANCIAL YEAR	TURN OVER IN CR'S
2019 - 2020	20,18,29,046 RS (20 Cr's+)
2020 - 2021	25,40,72,201 RS (25 Cr's)
2021 - 2022	36,00,00,000 RS (36 Cr's+)
TOTAL	81,00.00,000 RS (81 Cr's+)

THE FORCE BEHIND

The company's directors are from different backgrounds who bring collective knowledge and age-old wisdom to the table. That apart, they assist in handling critical issues encompassing the infra domain with shrewd acumen. These professionals' in-depth knowledge and rich experience related to Highway (O&M), facility management, resource management, security operations, etc. ensure the operations are seamless while the delivery timelines are satisfactorily drawn and met on every occasion. Having travelled the world, the directors possess excellent knowledge along with rich regional experience essentially for managing Infra industry business successfully.

OUR MANAGEMENT



CB. RAMAKRISHNA
Managing Director



J.V.R. PRABHU
Director



CB. ANOOP KUMAR
DIRECTOR & CEO



CB. ABHILASH
Director

OUR PARTNERSHIP

Surya Teja Infra Projects Pvt. Ltd. has been handling projects of different magnitude. In an effort to render an effective service with quick turnaround times, it entered into Technical Joint Venture with Q Pave Solutions Pvt. Ltd, which is a recognized leader in paving and overlaying business in India. Q Pave Solutions has readily deployable state-of-the-art full-time Plant and Machinery (P&M). Their strong and centralized supply chain system ensures seamless processes and unhindered project operations. Q Pave will work for the overlaying and repairs of highways.



Our Resources. Your Roads.
QPAVE SOLUTIONS PVT LTD.





**Major Maintenance
of Highway**



**Routine Maintenance
& Repair Works**



Toll Operations



**Incident
Management**



**Facilities
Management**



Safety & Security

THE 'HIGHWAY' FOR DEVELOPMENT!

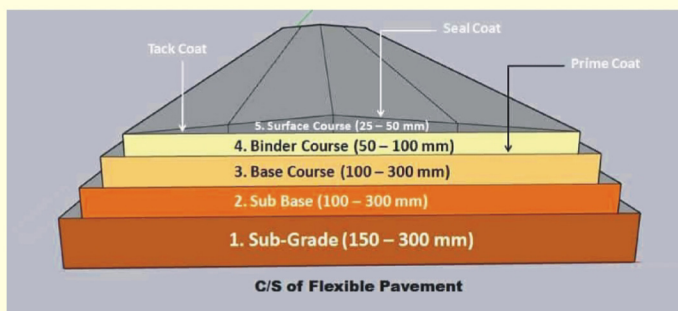
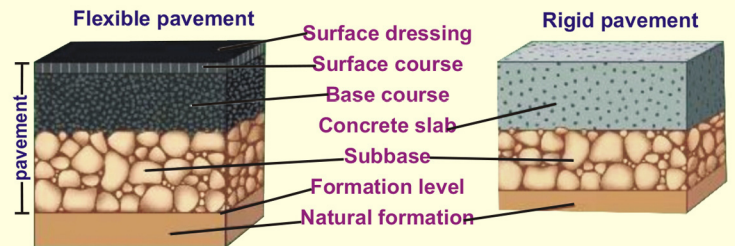
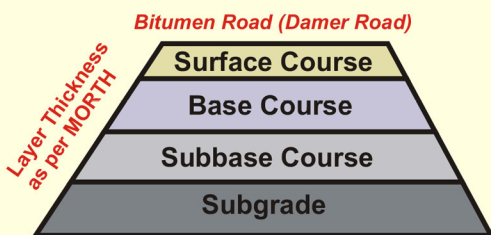
Today, transportation is one of the leading infrastructure sectors. Accordingly, one amongst the many drivers for nation building is the development of the highways, railways and airports. The Indian government's larger initiative PPP (Private Public Participation) has not only changed the tide in its favour, but also added growth impetus to the nation. The PPP model in Highways, Airports, and Sea Ports has thrown up opportunities for many infra companies to construct global standards infrastructure. Surya Teja Infra has identified niche areas and plans to bridge this gap through world-class products, turnkey solutions and unmatched services. It has already tied-up with national players and plans are on the anvil to work with global companies to provide services of unmatched quality.

OUR SERVICES

- Toll Revenue Collection & Assistance.
- Toll/HTMS expert services
- Highway Patrolling & Incident Management
- Operation & Maintenance of Highways
- Major Maintenance, Repairs & Over laying.
- Routine Maintenance.
- Security Services
- Facilities Management.
- Training and staffing of skilled workforce etc.
- Video-based auditing and Forensic detection.



ROAD COURSE & FLEXIBLE PAVEMENT



Components of Road Maintenance



SKILL DEVELOPMENT & TRAINING FOR WORKFORCE

The growth of infrastructure industry has been phenomenal during the last decade. However, there is still a chasm in finding skilled workforce to meet the spiraling demands. Surya Teja Infra plans to fill this gap through training and skill development programs for the youth. The move is bound to generate employment while helping in nation building. The Tutelage offered to build skill-sets amongst the present youth are:

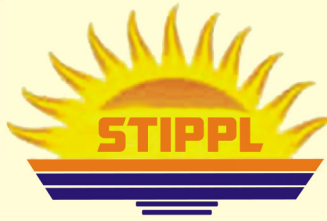
- Tolling operations
- Toll Collectors & Supervisors
- Construction Supervisors
- Road laying and repairing
- Construction Material testing & laboratory management
- Plant & Machinery maintenance
- Surveying
- Horticulture & Nursery
- Incident/ Accident management
- Route operations
- Para medic services
- Driving of Special construction equipment like JCB, CRANE, Bob cat, Sweeping machine.



SOME OF OUR CLIENTS:

The list of a few esteemed clients in the areas of Highway(OMT), FM(Facilities Management) & Security operations :-

- GMR-GHV TOLL PLAZAS 1to 3 ON NH-65, HYDERABAD - VIJAYAWADA, TELANGANA & ANDHRA PRADESH.
- GMR TOLL PLAZA KSTPL INDORE, MADHYAPRADESH, INDIA.
- GMR INFRA LTD, DFCC RAILWAY PROJECT, KANPUR, MIRZAPUR & MUGHALSARAI, UTTAR PRADESH, INDIA.
- GMR SRI VASAVI INDUSTRIES LTD., KHARAGPUR, WEST BENGAL, INDIA. (SEPT 2014 to MARCH 2016).
- FEEDBACK BRISA HIGHWAYS OMT PVT. LTD., (RAYALASEEMA EXPRESS HIGHWAYS PVT.LTD).
- TOLL PLAZAS, 1 and 2, KADAPA & KURNOOL, ANDHRA PRADESH.
- FEEDBACK BRISA HIGHWAYS OMT PVT. LTD. RAJHMUNDRY GODAVARI BRIDGE LIMITED. TOLL ROAD PROJECTS(RGBL), RAJHMUNDRY, ANDHRA PRADESH.
- IRB INFRASTRUCTURE DEVELOPERS LTD, (ORR) HYDERABAD, TELANGANA.
- KALYANI RAFAEL ADVANCED SYSTEMS PVT. LTD. (KRAS), HYDERABAD, TELANGANA. (IN ASSOCIATION WITH GMR RAXA)
- KMC PRIVATE LTD (INFRASTRUCTURE-ROAD PROJECTS)

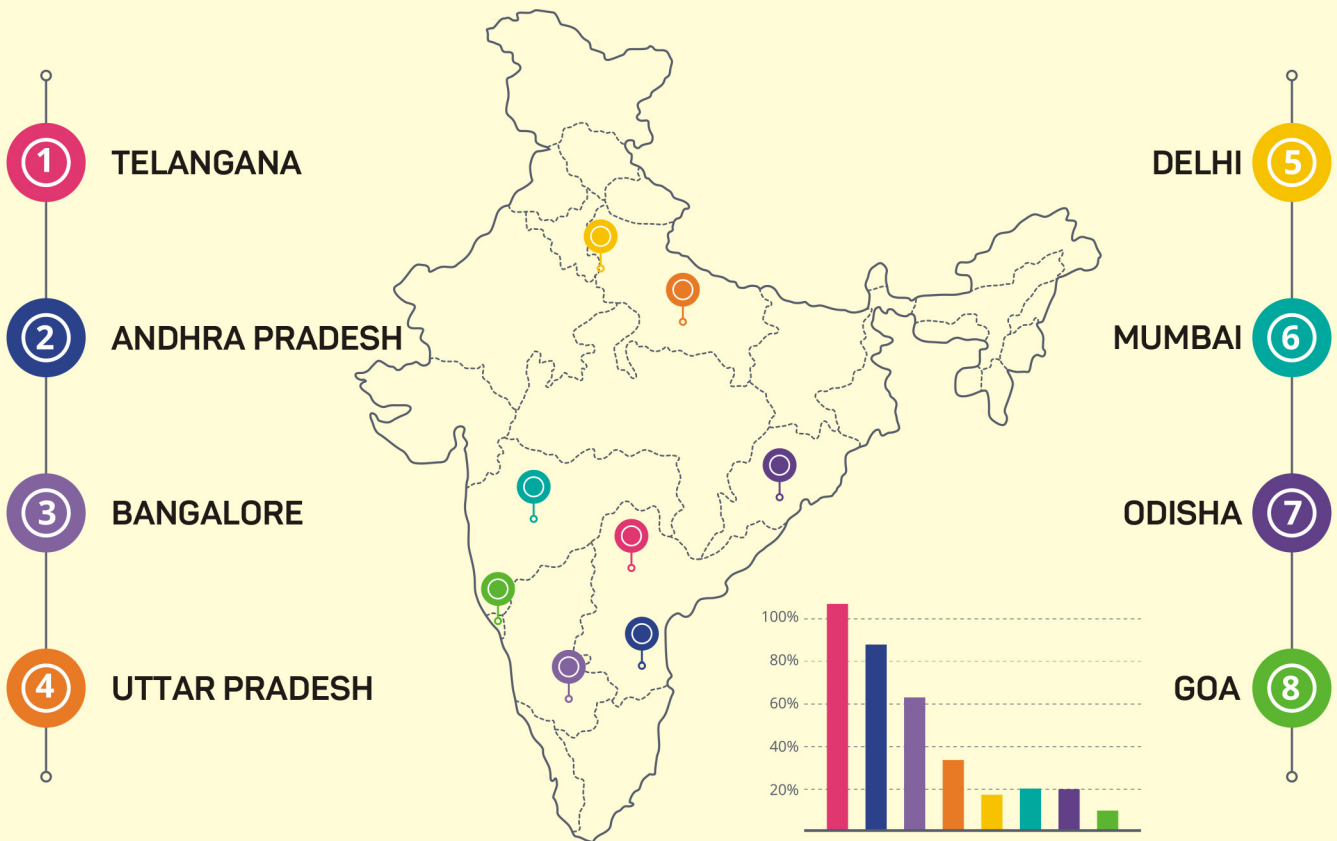


SURYATEJA
INFRA PROJECTS PVT. LTD.



GIS

GEOGRAPHICAL INFORMATION SYSTEM



Timings :
Monday - Saturday : 9-00 a.m. to 5-00 p.m.

Corp. Office : House No. 8-3-127/2/D, Plot No.153, Flat No.201, Aruna Nilayam, opposite road to Kotak Bank, Behind Udipi Hotel lane, Srinagar Colony, Hyderabad - 500 073.

Office : 040-48507999 | **Mobile :** +91-9032848562 | **Email :** info@suryatejainfra.com

Website : www.suryatejainfra.com | www.suryatejafacilities.com